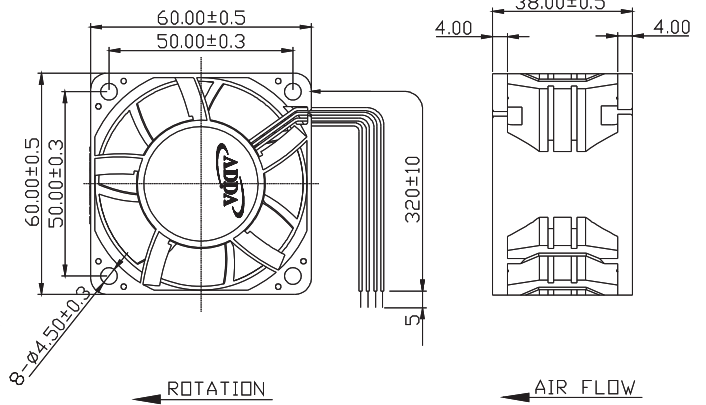


External Dimensions



Frame:Plastic(UL:94V-0)
 Impeller:Plastic(UL:94V-0)
 Lead wire:UL1007AWG24

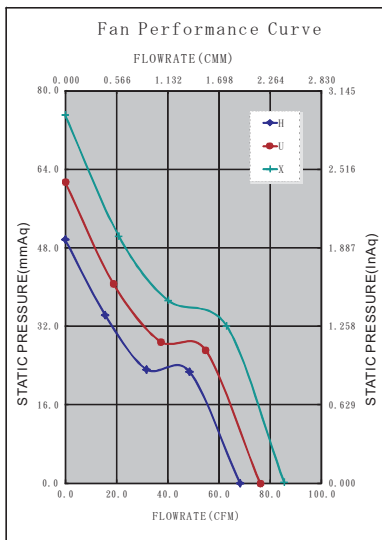
Specifications(Nominal)

*Noise is measured at the distance of one (1) meter from the axis of intake.

Bearing type: ⊙=Ball ⊛=Sleeve ●=Hypro bearing

Frame size (mm)	Model No.	Bearing System Type	Rated Voltage (VDC)	Current (A)	Power (W)	Rated Speed (rpm)	Maximum AirFlow (CMM)	Maximum AirFlow (CFM)	Maximum Pressure (InAq)	Maximum Pressure (mmAq)	*Noise Level (dB/A)	Weight (g)
60x60x38	AS06012HB387100	⊙	12	1.45	17.40	13000	1.934	68.370	1.954	49.630	61.4	125.0
	AS06012UB387100	⊙	12	2.10	25.20	14500	2.155	76.180	2.415	61.340	64.1	
	AS06012XB387100	⊙	12	2.70	32.40	16000	2.420	85.540	2.953	74.930	66.7	
	AS06024HB387100	⊙	24	0.73	17.52	13000	1.934	68.370	1.954	49.630	61.4	
	AS06024UB387100	⊙	24	0.92	22.08	14500	2.155	76.180	2.415	61.340	64.1	
	AS06024XB387100	⊙	24	1.25	30.00	16000	2.420	85.540	2.953	74.930	66.7	
	AS06048HB387100	⊙	48	0.36	17.28	13000	1.934	68.370	1.954	49.630	61.4	
	AS06048UB387100	⊙	48	0.47	22.56	14500	2.155	76.180	2.415	61.340	64.1	
	AS06048XB387100	⊙	48	0.63	30.24	16000	2.420	85.540	2.953	74.930	66.7	






Specifications subject to change without notice.



*Motor protective circuit and third lead wire functions

0	1	2	3	4	6	7	8	9	A	B
	✓	✓	✓					✓		✓

*Safety approvals

				
				✓